

COLLECTED  
NOTES AND  
RECOLLECTIONS

February 2, 2021



**A TRIBUTE TO  
CHARLES E. BEVERIDGE**



NATIONAL  
ASSOCIATION for  
OLMSTED  
PARKS

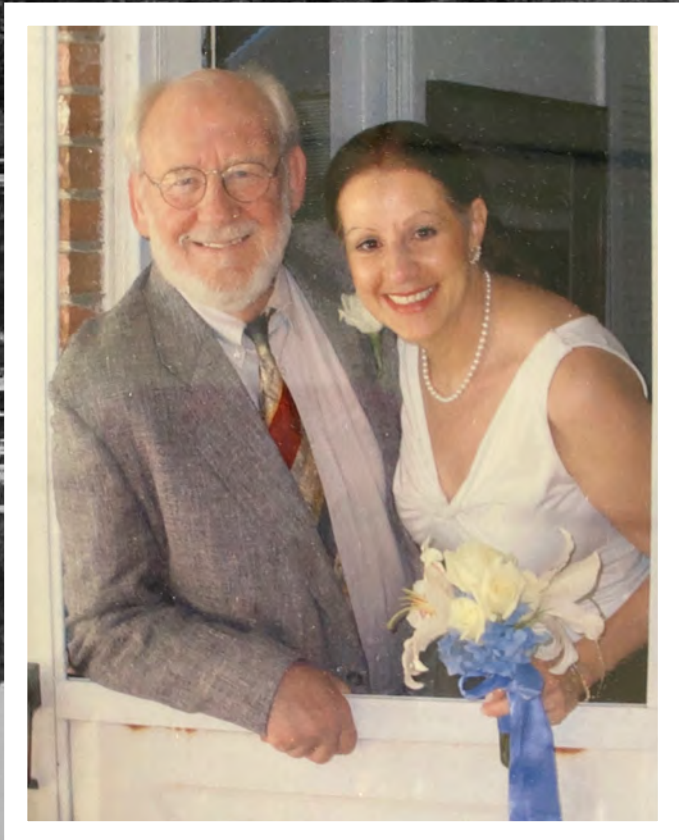
*Upon the completion  
of The Frederick Law  
Olmsted Papers*

# A Brief Timeline

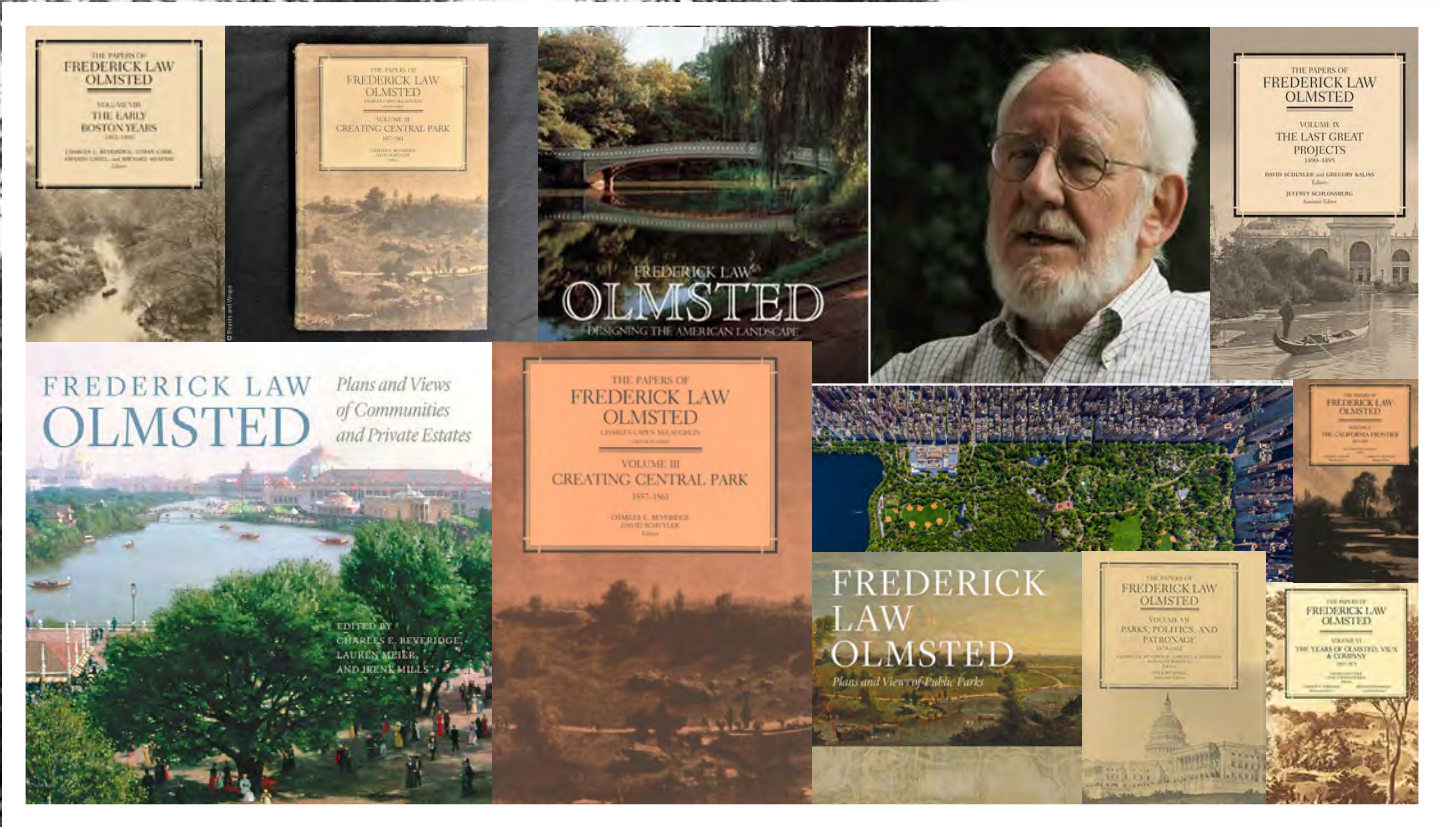
- 1935** ● **Charlie is born! Boston, MA**  
FATHER: landscape painter known for watercolors of Coastal Maine  
MOTHER: weaver, fabulous cook, gardener & “a beloved gentle soul”
- 1940’s-52** ● Attends one-room public school, Johnston, VT; Land Haven School, Camden, ME; and Putney School, Putney, VT
- 1956** ● **A.B., History, Harvard College, *magna cum laude***
- 1966** ● **PhD., History, University of Wisconsin**  
**Thesis: Frederick Law Olmsted: The Formative Years, 1822-1865**
- 1964-1972** ● Faculty Member, University of Maryland; Meets Charles McLaughlin (late ‘60s)
- 1972** ● **Starts work on the FLO Papers Project**
- 1980** ● Meets Faye Harwell, FASLA (marries in 2006)
- 1982–Present** ● **Becomes Series Editor, FLO Papers Project**
- 2020** ● **Completes 12<sup>th</sup> and Final Volume of the Papers**













# Awards Galore

- 
- 1981** ● Founders Award w/ Charles C. McLaughlin, American Civil War Museum
  - 1998** ● American Horticultural Society, Gold Medal, w/ Rizzoli, for ***Frederick Law Olmsted: Designing the American Landscape***, published 1995
  - 2000** ● National Medal for Historic Preservation, The Garden Club of America
  - 2005** ● Honorary Membership, American Society of Landscape Architects
  - 2005** ● ASLA Olmsted Medal, highest award for a non landscape architect
  - 2008** ● Stewardship Excellence Award, The Cultural Landscape Foundation
  - 2012** ● Charles E. Beveridge Research Fellowship, Friends of Fairsted
  - 2015** ● Preservation Hero Award, Library of American Landscape History
  - 2015** ● Lifetime Achievement Award, Foundation for Landscape Studies





## Arleyn Levee

BOARD MEMBER

National Association for Olmsted Parks

*On the Occasion of the Completion of The  
Olmsted Papers Project*



CHARLIE—

It's been over 40 years since we first met — in those dark days of degraded and dangerous parks filled with a patchwork of ill-conceived improvements.

You had more hair!! — I had fewer wrinkles!!!

To those of us at that time, anxious to learn how to improve these despoiled open spaces, you shared your scholarship about the intended designed beauty once gracing these public landscapes. Through your narratives, disparate advocates gradually coalesced into a national movement.

This was the story of Olmsted — which you reminded us to spell minus that pesky 'a'!! These were The Master's words about: respect for **Site**; the creation of **Scenery**; of **Separation** of ways and **Styles**; of **Suitability** and **Service**; and of **Subordinating** all to landscape values — some of your famous 7 'S's.'

Beyond the words, you brought a profound comprehension of the extent, diversity and intentions of Olmsted's works — and an ability to interpret for us the written ideas as 'design on the ground.' You brought an eye attuned to landscape scenery, no doubt influenced by a father — an '*en plein air*' artist — and a mother and grandfather with strong ties to landscape.

More than these skills you brought a wonderfully wry sense of humor and a great generosity of spirit — a willingness to go hither and yon to talk to community groups about their properties [even to don a top hat to recreate Olmsted at Birkenhead !].

You willingly mentored young scholars — like yours truly — about the 'thickets' of Olmsted files from the firm's 100-year history and advised design professionals emerging into the practice about how an understanding of Olmsted's philosophy and scenic artistry could enrich their own work. One such young professional seeking advice was a dark-haired, talented landscape architect who would become the love of your life.







However, your most remarkable accomplishment has been the direction through trial and tribulation, of the editing and publication of ***The Papers of Frederick Law Olmsted*** — a project of great dedication and consummate perseverance.

To extract coherence from that vast collection of documents — some of which were Olmsted's thoughts on scraps of brown paper, illegibly scribbled and poorly spelled — and to make lucid and accessible Olmsted's influential ideas which shaped America's urban fabric. This has been an extraordinary '***Tour de force***' with lasting implications as to how we understand and steward our surroundings.

On a personal note, it was certainly serendipitous, all those decades ago, for both the Levees to come within the Olmsted orbit — to meet so many of you who have assembled here tonight — albeit virtually — to pay tribute to Charlie's accomplishments.

More than the commonality of interests shared with Charlie and Faye — whether Olmstediana, Maine, travel, music, and especially food — it has been a relationship, originating in shared intellectual pursuits, which has deepened into an enduring and richly rewarding friendship.

Both Newt and I thank you, Charlie, as do so many here gathered, for all you have shared with us.

**Now, at the grand conclusion of this 12-volume “Oeuvre majeure,” we raise a glass to you to proclaim a heartfelt BRAVO!!!**











## Frank Kowsky

State University of New York,  
Distinguished Professor of Fine Arts,  
Buffalo State College,  
Member, National Association for  
Olmsted Parks Advisory Council



Frederick Law Olmsted once said that if it not been for his friendship with Calvert Vaux he would have been a farmer. Well, if it had not been for Charlie Beveridge, our knowledge of the Olmsted pantheon would be far shallower than it has been. Like others here tonight, I can testify that Charlie's help and example have seriously informed academic research across many fields of study.

Charlie, you may remember that we first met at the Library of Congress many years ago when I had sought out Charlie McLaughlin for help on the dissertation I was writing on the architect Frederick Withers. I can remember a lunch at a Capitol Hill restaurant as the first of many good times and energizing conversations that you and Charlie McLaughlin shared with me. You and I have continued that tradition to the present day. Nor is there ever a lack of good food and good wine to supplement the camaraderie. And the circle is often widened to include Faye and Helene.

Our travels in search of the past have led through Washington, Boston, New York, Buffalo, Niagara Falls, Maine and many places in between and beyond. Seen through Charlie's eyes, the esthetic tradition that Olmsted and Vaux represent has assumed solid form in all our minds. It can also lead to disappointment when we see things that don't measure up to what they were or could be. But Charlie has generously lent his energy and impeccable scholarship to the cause of renewing the Olmsted legacy that encompasses scenic preservation, parks and parkways, and urban, suburban, and institutional landscapes.

Although the Covid 19 virus and other developments have curtailed in-person meetings, our conversations continue into the present-day. It is a rare gift to enjoy the life of the mind together with the comradeship of an erudite and generous fellow-traveler. The completion of the final volume of the Papers represents a monumental achievement of scholarship which all who have known you, Charlie, warmly applaud. For me, it is also a milestone in an enduring friendship.

*Buffalo, NY, February 2, 2021*









## **Ann Satterthwaite**

Former Board Chair,  
National Association for Olmsted Parks  
Member, NAOP Advisory Council



Here's to Charlie, a well-deserved and most welcome tribute to this accomplished scholar.

Charlie became the voice of Olmsted not only through his scholarship, but through his willing and thoughtful advice to cities and towns, scholars and laymen, and to organizations like NAOP.

An important example of his help to NAOP was his work on the federal Olmsted legislation, the Olmsted Heritage Landscape Act, in 1984 when Don Harris and I were NAOP co-chairpersons.

This legislative initiative, sponsored by Congressman John Seiberling and Senator Daniel Patrick Moynihan, was designed for the National Park Service to establish an inventory of Olmsted landscapes. It was hoped that the inventory would arouse interest in Olmsted landscapes, but it was blocked by the National Park Service and a coalition of educational institutions. Although this legislative effort failed, it produced remarkable results: the Park Service added cultural landscape architects to its staff and also initiated the Historic American Landscape Survey, similar to HABS, Historic American Building Survey.

This is just one instance where Charlie's scholarship and knowledge were helpful to NAOP - and to the public by increasing the knowledge and appreciation of Olmsted and his landscapes.







## **Betsy Shure Gross**

Founding Board Member

Former Board Chair,

National Association for Olmsted Parks

Member, NAOP Advisory Council



Dear, dear Charlie! THANK YOU!

My role tonight is to say THANK YOU from all the representatives of Friends Groups and volunteers across the nation.

From the 1979 gathering in Buffalo where we created the National Association for Olmsted Parks:

For your gift of scholarship;

For your kindness to passionate amateurs as we came together to protect our parks – to salvage them from unconscionable deferred maintenance and not so benign neglect;

THANK YOU.

For being there as we fought to prevent intrusions from new school buildings to concrete fishing piers to parking lots to lighted football fields to skating rinks into the passive landscape;

THANK YOU.

For your willingness to take our calls for help seriously which made all the difference!!!  
THANK YOU.

Informed by your research and answers to the questions we barely knew how to ask, our confidence and ability to face and educate, persuade and cajole mayors and city counselors, Boards of Selectmen and conservation, preservation and park and recreation commissioners grew. We were, and are, enhanced and sustained by what you taught us.

So early on, your 7 S's and the original 'Beveridge list' enabled us to connect with other advocates and park stewards to create a movement to preserve, protect, restore and rehabilitate the treasures of THE OLMSTED LEGACY.

THANK YOU.

We are more GRATEFUL than you can possibly know. As are the multitudes whose lives are enhanced by their use of their Olmsted designed landscapes saved because of your scholarship and your willingness to SHARE it with so many for so long.

THANK YOU, CHARLIE.



## Elizabeth Barlow Rogers

President,  
Foundation for Landscape Studies



Few feats of scholarship equal Charles Beveridge's dedication of thirty-five years of his life to the editing of Olmsted's correspondence, reports, and other writings. In addition to authoring several of the historical essays that accompany the twelve-volume series comprising *The Papers of Frederick Law Olmsted*, he has produced supplementary volumes that bring into biographical focus Olmsted's multi-faceted career as a designer of American public parks, private estates, and new communities.

But Charlie's contribution as the pivotal force in the production of this corpus of literature by and about Olmsted goes beyond the enrichment of academic studies.

The founding of the National Association for Olmsted Parks in 1980 and the subsequent birth of landscape conservancies throughout the country over the next forty years created a need for park restoration advocates and consultants, park administrators, and government officials to understand the landscape design and management principles as well as the underlying philosophical motives that were fostered by the father of landscape architecture in America.

For an in-depth crash course as well as a comprehensive survey, there was, and remains, no one better to turn to than Professor Beveridge.

***It is a privilege therefore for me to raise a toast: To Charlie, the man who, more than anyone else, introduced this and coming generations to the life, times, and work of Frederick Law Olmsted!***









## Remarks in honor of Charles Beveridge

2 February 2021

### Laurie Olin



First, my greetings to everybody, and my full agreement with all the compliments we've just heard about Charles Beveridge and his accomplishments. I particularly wish to offer my congratulations as well on completing the twelfth volume of the Olmsted Papers!

What I would like to add are a few thoughts about the importance of Charlie's work as a historian. Societies tell stories about themselves and their narratives become the collective memory that underpin society. Without memory we have no culture or basis for making decisions, no sense of who we are, how we got here, where we might go, what we might aspire to, or how to do it. History is cumulative and subject to gaps, erasures, untruths, and propaganda. From time to time there are upheavals in the narrative, revisions or discoveries that change and help society. Changes in historiography not infrequently set in motion actions and changes in an entire field of scholarship, in our collective understanding, and induce changes in policy and action.

Some figures change History and shift our understanding of important aspects of the past. Rather than spend time burrowing into arcane information and academic trivia, they tackle big subjects, major figures, great — not minor — topics. One thinks of Jim Ackerman, fresh from study with Rudolph Wittkower, who decided to tackle Michelangelo's architecture, thereby overturning generations of hagiography and transforming architectural history before moving on to do the same with Palladio and his work.

Another such figure was Fernand Braudel, the French historian who plunged into the economics of the end of the Medieval era and produced what was effectively an ecological framework to analyze and present the rise of the mercantile system that fueled the Renaissance and transformation of the material world in the West: the architecture, art, politics, and material goods of the entire Mediterranean and European regions.

So too, with Charlie Beveridge, the acknowledged leading scholar of the life and work of Frederick Law Olmsted Senior, who has — with the assistance of a cast of colleagues



and protégés — opened up and presented in full the scope and accomplishment of one of America's most extraordinary and original social thinkers, who also was one of the most effective figures of action in his time, the entire second half of the 19th century — a time of unprecedented upheaval, economic and urban growth, conflict, opportunity and crisis. As has been amply noted, Olmsted was a polymath, whose legacy we are still in the process of coming to fully appreciate. A contemporary of Lincoln and Marx, of Whitman and Twain, his accomplishments in urban planning, park design, infrastructure, and conservation have been in plain sight all around several generations of Americans, but had gone almost unnoticed for decades, and certainly not understood, appreciated, or emulated effectively — much in the manner as in the quip of Ian McHarg's that 'fish will be the last creature to discover water.'

Beveridge, however, did notice, and early on. By my calculation he began working on the Olmsted papers soon after leaving college, while still in his twenties. As has been mentioned, after nearly ten years of working independently with Olmsted material while teaching, Charlie joined Charles McLaughlin at the very outset of editing and publishing the entire output of Frederick Law Olmsted Sr.'s decades-long correspondence and writing — staying on for the 'long durée (to use Braudel's word) — inheriting the mantle of leadership and seeing it through. In so doing, Beveridge and his entourage have recovered one of the most important figures in the history of American intellectual, professional, and public life, whose work is, if anything, most important and pertinent for us to know, understand, and emulate today.



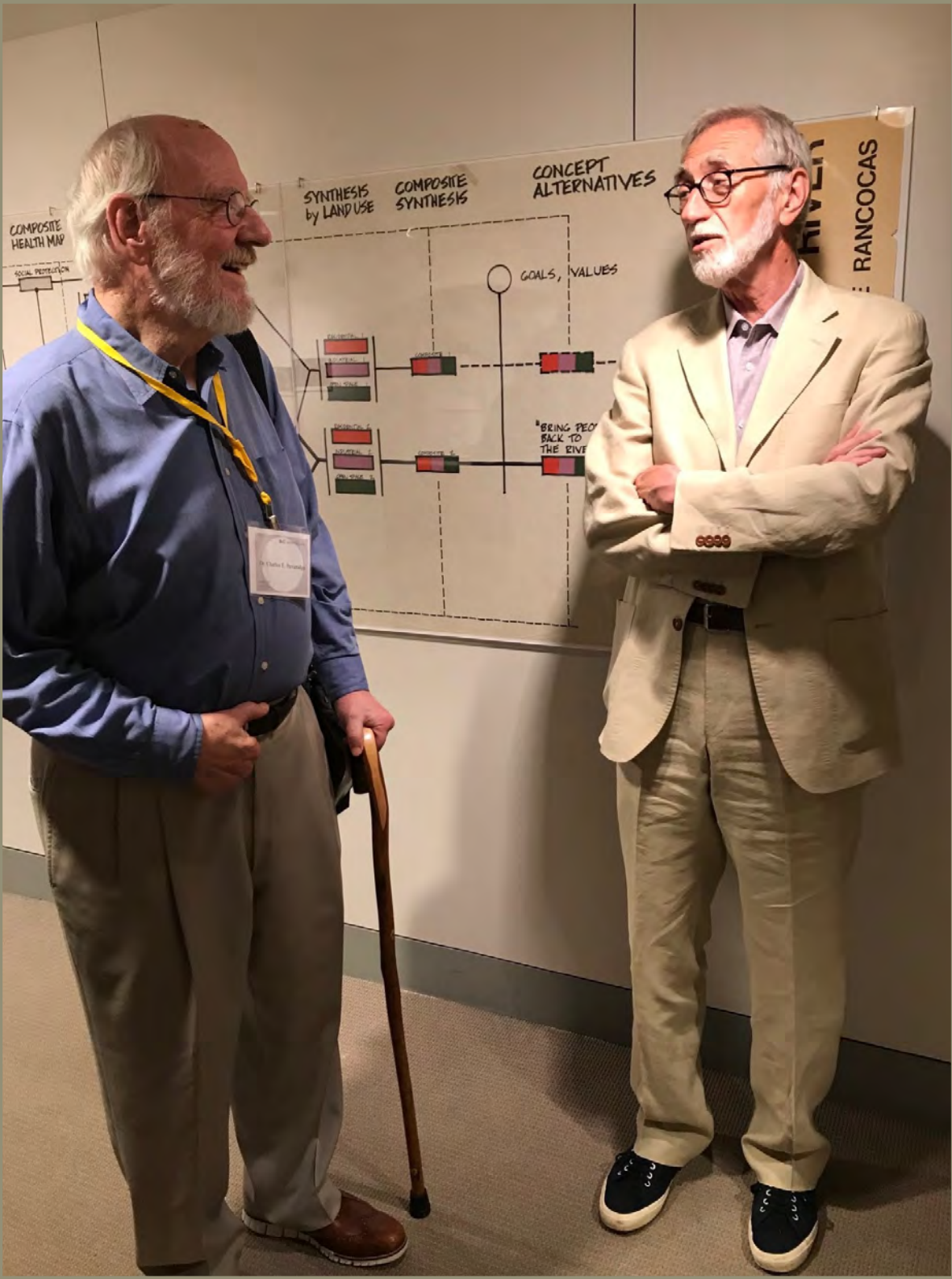
Olmsted intuited the essential relationship between the natural world and human health, and spent his life working, often to exhaustion, toward the improvement of American cities and the preservation of important and unique landscapes across the country, in the course of which he also established a profession with such a purpose, Landscape Architecture. He was more than a reformer — although he was that — he was a seer and innovator, whose message and example is particularly important today as society confronts the multiple threats of global climate change, an international pandemic, and rising political and economic problems on every continent.

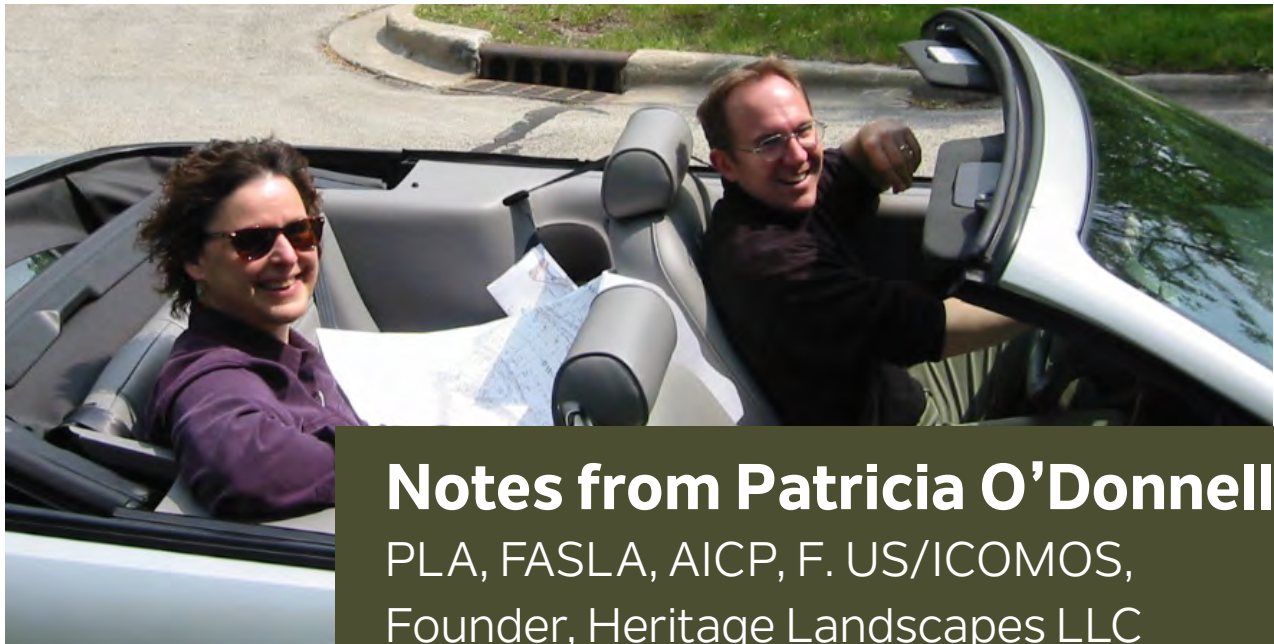
While we have all appropriately praised Charlie for his scholarship, editorial endeavor, and service to society and the nation, I'd like to end by thanking him and praising him for his own writing, which I find remarkable and as much a pleasure as uplifting. The volumes of papers are more than a collection of letters, memos, essays, and articles, put in order, but also with their introductions contain a wealth of context and biographical detail without which few of the other books written about Olmsted in recent years would have been possible.

Like some present this afternoon, I can remember what it was like trying to work with any of the papers before they were edited and published by Johns Hopkins Press. Back in 1983, I had to order a microfilm from the Library of Congress for a particular portion of the papers having to do with the scheme for Riverside Drive, which was one of the last projects FLO did with Vaux before decamping to Brookline, and one which Charlie and company wouldn't get to for nearly a decade. It was a saga and not easy to work with. Today, any student, scholar, writer, preservation officer, or professional anywhere can look up the volume it's in and easily learn its story. Likewise, with the rest of the enormous body of work — it is truly an invaluable resource for all.

In closing, I'll note that of several shelves in our office filled with books relating to Olmsted, his life and work, two of my personal favorite works of Charlie's are the second Supplementary volume of *Plans and Views*, and his own separate volume, *Designing the American Landscape* (Rizzoli). The first of these, with its well-made color reproductions of the handsome renderings from the Olmsted office that are scattered about in various collections and archives around the country — not just at Fairsted — is a wonder and godsend to educators and professionals. I'm certain that its mate, the third supplemental volume, which just appeared, must be its equal in quality and value. The other of these books, *Designing the American Landscape*, is as handsome a book as one could want with its gorgeous photographs and remarkably perceptive text. For me it is special because here we are given the gift of Charlie's voice as he takes the reader around Olmsted sites across the country personally — we hear his soft New England voice point out the depth of aesthetic genius as he shows us with his sharp eye the nature of Olmsted's own sharp eye. Like all great scholars Beveridge has spent a lifetime with original documents and has come to understand and care for them deeply — but in this case not just for the papers, but the actual work they engendered, the physical landscapes, the gardens and estates, the streets, boulevards, preserves, and reservations, and above all the parks great and small, which are the achievement and legacy of one of the greatest minds and spirits in American History. Charlie, thank you so very much!







## Notes from Patricia O'Donnell

PLA, FASLA, AICP, F. US/ICOMOS,  
Founder, Heritage Landscapes LLC

“

I am very pleased to contribute a few memories of the long association and friendship Charles Beveridge and I have shared, to this tribute event. My initial work with Charlie began in 1983 when I was project manager for Walmsley and Company, on the Prospect Park Perimeter, Lake and Ravine historic landscape reports. Charlie and David Schuyler served as Olmsted historians, aiding the documentary efforts, considering integrity and change, and weighing in on preservation direction, for our valued colleague Tupper Thomas, then leader of the Prospect Park Conservancy.

From 1984 to 1986 we collaborated on advocacy for the Olmsted legislation and, while we did not gain a law, the work led to important advances in recognition of historic designed landscapes as heritage assets, worthy of documentation and preservation. We both contributed to a pivotal meeting with the National Park Service, in 1986 if I recall correctly, that led to the NPS Cultural Landscapes initiative, program and federal cultural landscape staff.

Starting Heritage Landscapes in 1987, I often called on Charlie to collaborate. For the Louisville Parks Master Plan team in 1992, addressing Cherokee, Iroquois and Shawnee Parks and 14 miles of Parkways with my office and Andropogon Associates, Charlie's work with Arleyn Levee to gather the relevant Olmsted documents spanning decades was an invaluable resource.

In 2002 we worked together to rethink the Riverside National Historic Landmark to specifically identify the landscape contributing features. Over two beautiful sunny days, we rode around in a convertible scribbling on large maps flapping in the wind. (Photo taken by Charlie)

A notable recent collaboration was on the Capitol Square Cultural Landscape Report, 2010 to 2012, where our research uncovered extensive documentation of the nearly two-decade project leadership of Frederick Law Olmsted, Sr. Charlie provided an exceptional essay titled 'Olmsted's Design of the Capitol Grounds.' I value our friendship spanning these 38 years. Charlie's scholarship and insightful thinking about Olmsted have permeated our shared works, to uplift those projects, deepening understanding of the Olmsted legacy toward greater respect and focused preservation.





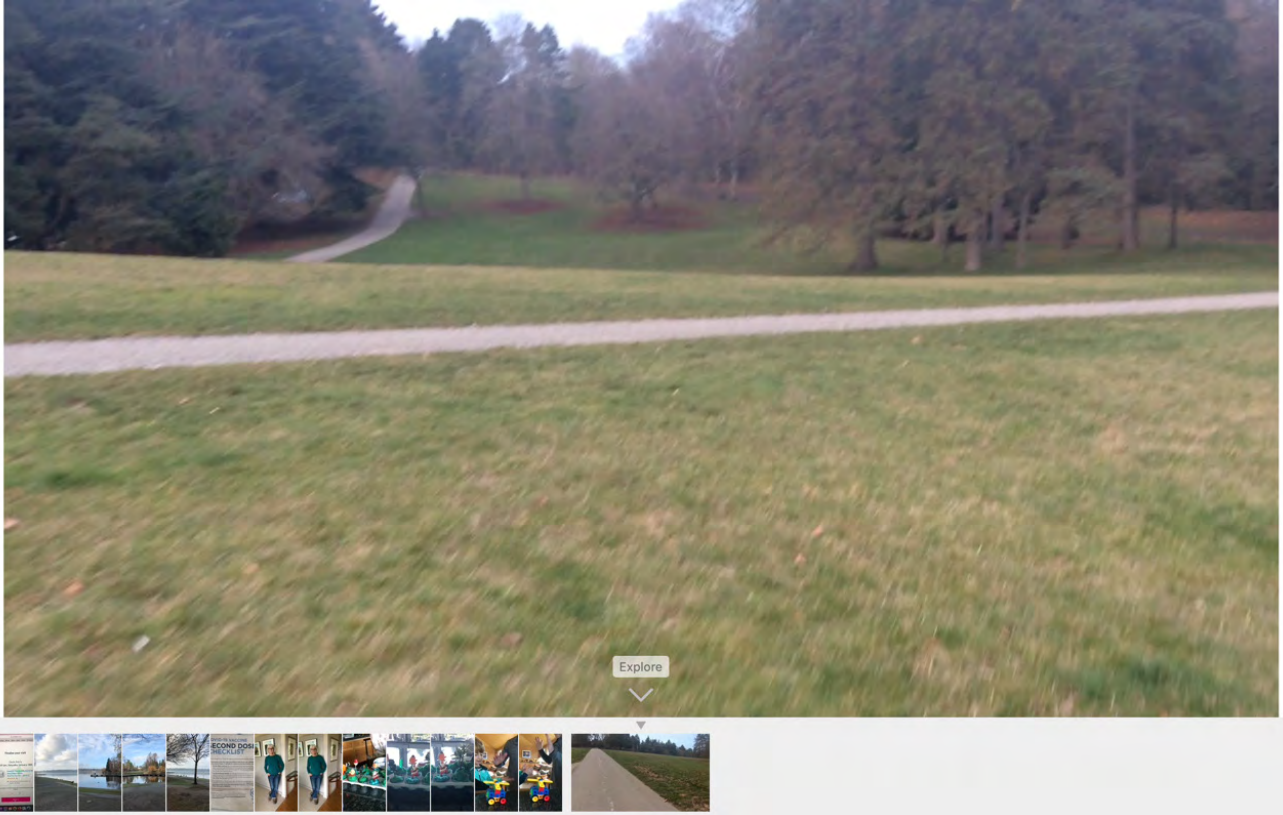
**Barbara Bair, M.A., PH.D.**  
Historian & Specialist for Literature,  
Culture, and the Arts, Manuscript Division  
The Library of Congress, Washington, DC



It is with deep appreciation that I congratulate you and all the staff and scholars of the Frederick Law Olmsted Papers over the years on the publication of the twelfth and final volume in the Olmsted Papers series. The cumulative high-quality work produced by the project has proven to be of inestimable worth to Olmsted scholars, students, teachers, preservationists and historians.

The volumes, with their transcriptions and annotation and description, are master works that are invaluable to researchers, and are incomparable for use in combination with related archival primary sources in repositories in the United States and abroad. They draw in researchers and new learners interested in all aspects of Olmsted's life and in specific projects, collaborations, relationships, plans and creations, from private to public. As a fellow documentary editor, and as current curator for the Frederick Law Olmsted Papers and the Olmsted Associates Records at the Library of Congress, I applaud you. Thank you so much! I convey my very best wishes to you during this very well deserved celebration.





## Donald Harris

Founding Board Member,  
National Association for Olmsted Parks  
Former Board Chair  
Member, NAOP Advisory Council

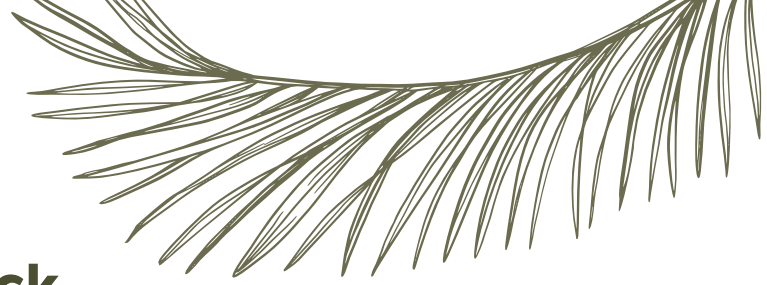
“

As a founding member of NAOP in 1980, followed several years later by the establishment of the Friends of Seattle's Olmsted Parks, it wasn't long until I met Charlie. To be candid, I was in awe of meeting, at that time, both the editors of the Olmsted Papers. As time went on and I got to know Charlie better and we became friends, despite my suggesting to him that he stop ignoring the work of the Olmsted brothers, in his scholarly work.

I hosted Charlie on a visit he made to Seattle. It was eye opening! After walking through what I believed to be the best of the Olmsted historic legacy parks in Seattle (Volunteer Park, Washington Park Arboretum & Lake Washington Boulevard), Charlie asked if we could see Woodland Park (that part adjacent to our Zoo).

Although I had jogged through there on occasion, I never realized either the significance or how iconic it was. But seeing it through Charlie's eyes and having him explain to me the significance, as a truly iconic Olmsted design, changed my perception and understanding of Olmsted principles from then on out!





## Joann Beck

Chair, Olmsted Parks Alliance  
President, Highland Park Conservancy



Your work in Rochester, New York, revealing the history and significance of our Olmsted Park system is the foundation of our advocacy for the future of this invaluable and imperiled legacy.

With gratitude for your work and for the very great privilege of working with you.

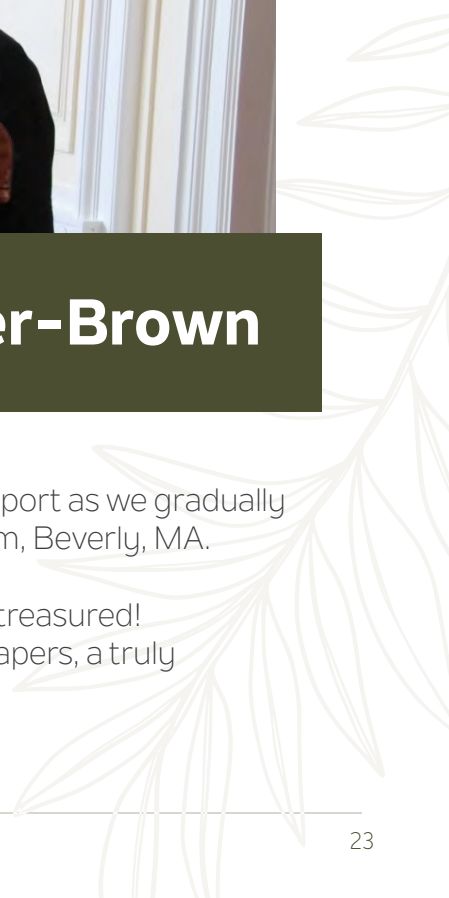


## Mimi Batchelder-Brown



Thank you for your knowledge, inspiration and continuing support as we gradually restored the Olmsted, Sr. designed landscape at Moraine Farm, Beverly, MA.

Your friendship, humor and sometimes presence were highly treasured! Congratulations on completing and publishing the Olmsted Papers, a truly monumental undertaking.





## Peter Harnik

Founder,  
Center for City Park Excellence  
The Trust for Public Land



Congratulations on the outstanding, magisterial achievement you have made, setting forth forever Frederick Law Olmsted's accomplishments and achievements. Scholars and lovers of beauty and design will laud your work far into the future.

On a personal note, I also want to thank you very much for the encouragement you gave me in the early days of the creation of the Center for City Park Excellence. The education, advice and guidance you gave me was greatly appreciated and played an important role in the later successes we were able to accomplish.

Thank you for, and congratulations on, the tremendous impact you have made on the generations of park lovers and activists who follow in your footsteps. The work you've done is truly important.







## Phil Loughlin

Member,  
National Association for Olmsted Parks  
Advisory Council



The Library of American Landscape History got it exactly right when it wrote that Charles E. Beveridge ‘... is the most important individual explaining and defending the significance of Olmsted’s legacy in our time.’ The occasion was in 2015, when Charles was named that year’s LALH Preservation Hero. It was a well-deserved honor.

I first heard about Frederick Law Olmsted, and about Charles, from my wife, Caroline, after she joined NAOP in 1989. She immersed herself in the Olmsted legacy, and was editing Volume IX of *The Papers of Frederick Law Olmsted* when she died. Today, all 12 volumes of The Papers are on a book shelf next to me as I write.

It was through these volumes that I learned more about Olmsted and developed a deep appreciation for Charles’ work. They are a remarkable example of scholarly research and writing. He has given us a detailed history of FLO that we would not have had without him.

Everyone is indebted to Charles: those who are admirers of Olmsted and his firm today; those who will discover Olmsted and his firm in the future; and, those who want to see the 19th century through the eyes of someone who lived it.





# University of Massachusetts

## AMHERST

### Department of Landscape and Regional Planning

---

210 Design Building  
551 North Pleasant Street  
Amherst, MA 01003-2901

voice: 413.545.2255  
fax: 413.545.1772

Anne Neal Petri  
President and CEO  
National Association for Olmsted Parks  
1200 Eighteenth Street, NW Suite 700  
Washington, DC 20036

January 20, 2021

Dear Dede:

I appreciate the opportunity to offer my congratulations on the completion of the Olmsted Papers Project and to put in writing, as best I can, a tribute to that project's guiding intellect and motivating force for over forty years, Charles E. Beveridge.

His official title of Series Editor suggests only part of what Charlie has accomplished in completing the published volumes of Frederick Law Olmsted's letters, park reports, plans, and other documents. He has given the direction and shaped the content of Olmsted scholarship as we know it. There are no historians or biographers in the field who have not benefitted—and been profoundly influenced—by the decades of editorial work represented by the Olmsted Papers. An entire preservation movement dedicated to preserving and enhancing our shared, living legacy of Olmsted's public parks and other landscapes has been instigated and informed by the research, annotation, and publication of the documents and plans that make effective stewardship possible. Not only historians, but park advocates and landscape architects use the published papers to a degree that few, if any, such documentary editing projects can claim. As they have been curated, researched, and presented by Charlie over the decades, the Olmsted Papers have taken a permanent place as part of the Olmsted legacy, even as much as the landscapes themselves.

Those of us fortunate enough to have worked as associate editors with Charlie can also bear witness to another of his accomplishments: no graduate degree program ever offered as effective an education in documentary editing and historical research than working with Charlie for the years necessary to prepare a single volume of the series. Charlie taught me what documentary editing should be and, more than that, how a historian should think and work. As an editor, an author, and a mentor, he showed me who Frederick Law Olmsted



was and why we should care so much today about his ideas and the places he designed. Those places are indeed more essential than ever, and so are those ideas. It is in no small part thanks to Charlie Beveridge's work that both will continue to be a living and vital legacy, available to help meet the social and environmental challenges of our day.



Sincerely

*Ethan Carr*

Ethan Carr, PhD, FASLA







## Irene Mills

Editor,

Supplementary Series Volumes 2 and 3

The Frederick Law Olmsted Papers

“

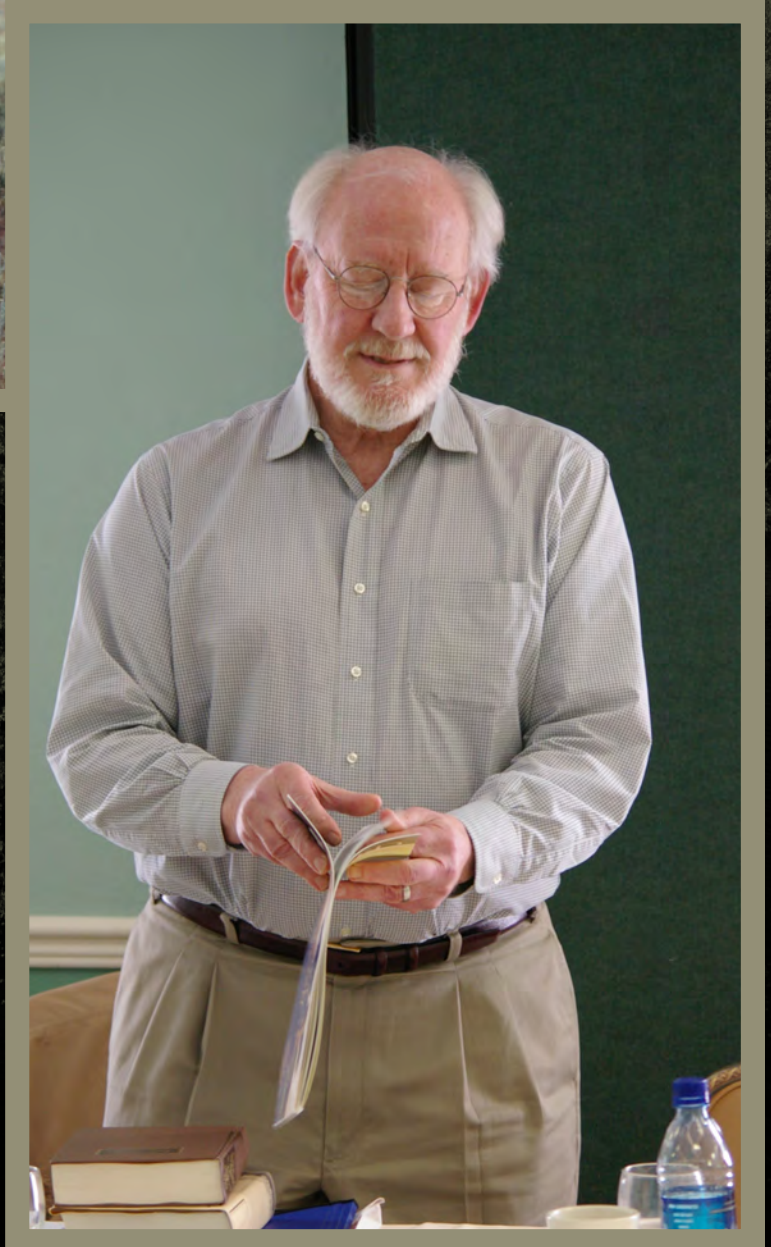
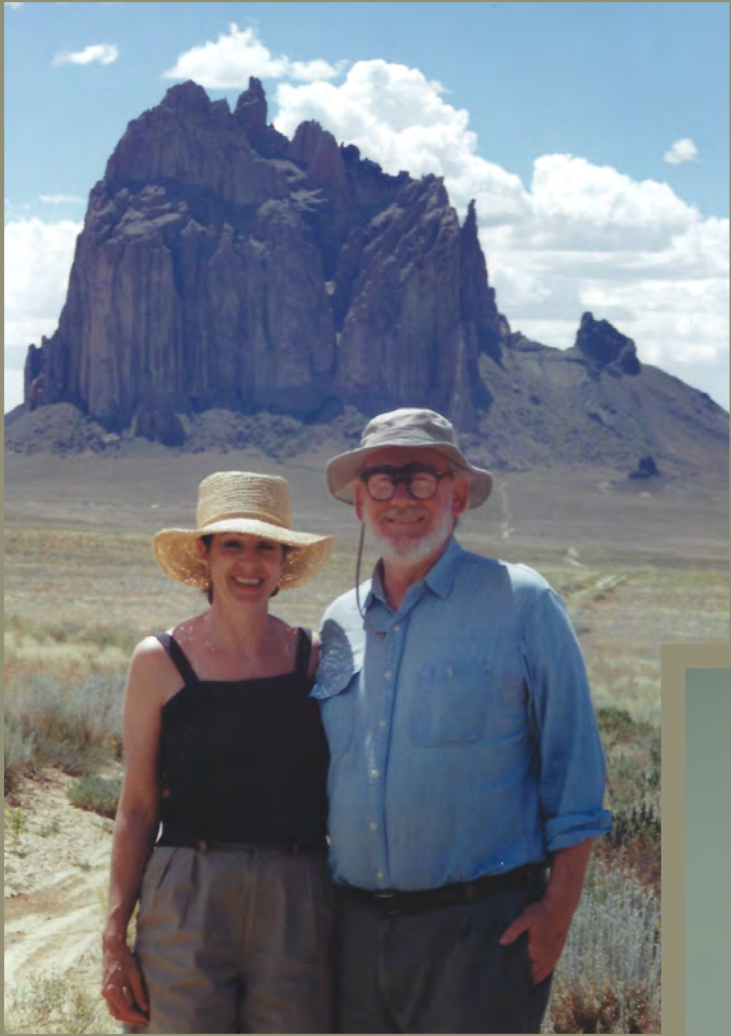
Dear Charlie,

I remember my first interview with you on a very warm Virginia day. You stepped out of the tiny elevator at 805 King Street in shorts and sandals, and an honest grin. You casually browsed my thesis, while I had no idea that you'd already published eight volumes of the Olmsted Papers and *Designing the American Landscape*. So began my apprenticeship.

You knew exactly what was needed for 'SS2'—*Plans and Views of Public Parks*—and that research at American University archives had to include lunch at Wagshal's Deli. You introduced me to editing—shuffling illustrations and changing the manuscript up to the last possible minute. Apparently, my training was not over because you invited me back for 'SS3'—*Communities and Private Estates*.

Thank you for challenging me, for answering silly questions, for your kindnesses, for persevering. Please count me among many others who are grateful for my Olmsted education and even more things 'Charlie.'









## Tupper Thomas

Founding Administrator, Prospect Park  
Founding President (1980 to 2011),  
Prospect Park Alliance



I first met Charlie in Boston at the NAOP conference in 1981. I went to his presentation on FLO and there were all these slides of Prospect Park. He introduced me to a whole new way of looking at the Park and at the design and certainly changed all the planning on the restoration of the Park that has been done in Prospect Park over the last 40 years. His research and then great support over many years was transformative. Millions of Brooklynites are grateful... especially me.



## Noni Ames

Former Board Chair,  
National Association for Olmsted Parks  
Member, NAOP Advisory Council  
and **Charlton Ames**



Thank you, Charlie, for your friendship over these many years.

We cannot think of another person who is as generous as you in so many ways: with your time, your knowledge, your ideas and your marvelous sense of humor.

Congratulations on your extraordinary accomplishment with the Olmsted Papers.

Please retire to Maine!

With much love, Charlton and Noni







# Daniel Chartier & Lyette Longpré

Montreal

Le 2 fevrier 2021

## Charles E. Beveridge: a personal and national treasure

### ENCOUNTER

Twenty-five years ago, a colleague asked me to visit Mount Royal with her and an Olmsted specialist and professor. The temperature was wonderful. We slowly and joyfully walked the carriage road through many Olmsted landscape poems. At the end of our leisurely walk, I took a bunch of plans handily drafted to superimpose the Olmsted Plan on the map of actual pathways and driveways. I also took an Olmsted Quotation booklet I made from Olmsted Mount Royal.

This was the beginning of a long road and a real friendship between Charlie, the Master, and me, the Learner. I always try my best to understand the larger Olmsted vision, helped by the subtle advice of Charlie.

### NAOP

Till recently, I was involved in the wonderful NAOP adventure, visiting marvelous parks, estates and campuses, meeting great people from all around North America. And always, Charlie was there to make us understand the history and logic behind these awesome successes.

There, from Charlie and other Olmsted specialists, I learned that Olmsted Mount Royal was, probably, his most achieved concept and perhaps his best example of a Picturesque Park as an asset for citizens living in a large City.

### MONTREAL

Charlie always was our best ally to defend the Olmsted Legacy in Montréal.

Charlie wrote a wonderful book named *Mount Royal in the Works of Frederick Law Olmsted* that everyone should read because it describes the main urban parks Olmsted designed and shows how this genius and artist was able to turn difficult problems into a series of unique exquisite solutions. Everywhere, Olmsted was able to achieve wonders where millions of citizens, each year, could reconnect through a nature subtly managed by men to make it more charming and soothing.

Charlie was so generous with me, with us. It was such an honour and a pleasure.



Here, in Montréal, I, Wendy and so many others are trying, again and again, to keep the genius concept of Olmsted alive and inspire other actions through our whole little Mountain.

## THE APEX OF A CAREER

Finally, half a century after beginning to carefully study Olmsted's life, Charlie, with the help of wonderful people, Caroline, Lauren, Faye and others, was able to achieve two magnificent illustrated books that survey the scope of Olmsted Design Achievements.

## FRIENDSHIP

Thank you, thank you, thank you so much Charlie for everything.  
Your generosity was outstanding.  
Surtout, Charlie, thank you for your friendship.

Amitié



On the Capitol Grounds, as in so many other places, Charlie joyfully explained to us the secrets of some wonderful and meaningful Olmsted landscapes. Thank you for these unforgettable moments.



## Victoria Post Ranney

Editor, *The Papers of Frederick Law Olmsted, Volume V: The California Frontier, 1863-1865* and  
Author of *Olmsted in Chicago*



Volume by volume, Charles Beveridge's life work has enriched our understanding of Frederick Law Olmsted's achievements in America.

As an Associate Editor of the Olmsted Papers and Editor of Volume V, *The California Frontier*, I learned from Charlie the excitement of discovering the details and range of Olmsted's work, and the discipline of how to present it clearly and accurately. Charlie's prodigious knowledge of Olmsted's landscapes and thinking was inspiring, as was the pleasure he took in it.

The enormous amount of detail in the now-complete twelve volumes of the Olmsted Papers that Charlie contributed to, edited and guided means that readers can start from any of Olmsted's landscapes or projects and begin to get a sense of the America that surrounded it. In the California volume, which covered the two years that Olmsted spent in that state from 1863-65, Olmsted struggled to run the largest gold-mining operation in the country, laid out plans for the newly reserved Yosemite Valley, designed his first cemetery, proposed a park for San Francisco, reported on the state's fledgling oil and wine industries, and wrote a long essay on what he called the 'pioneer condition' of American life, which reverberates to this day. An early National Association for Olmsted Parks expedition with Charlie to Yosemite when the California volume was published marked the excitement and commitment of the NAOP as a national organization.

My other connection to Olmsted and debt to Charlie Beveridge has centered on Chicago and its suburbs, where I have written about Olmsted's work. I picked Charlie's brain repeatedly about Riverside, Olmsted's 1868 railroad suburb, while my husband and I were developing Prairie Crossing, a transit-oriented conservation community north of the city. We debated whether Chicago's south park system, designed by Olmsted and Vaux, should be the site of the planned Obama Presidential Center. And Olmsted's design for the 1893 World's Columbian Exposition has never been so beautifully presented as in Charlie's final volume of the Olmsted Papers.





## Lynn Kerpel & Gale Walldorff

Road Fight Activists & Longtime Olmsteders,  
Druid Hills Linear Park

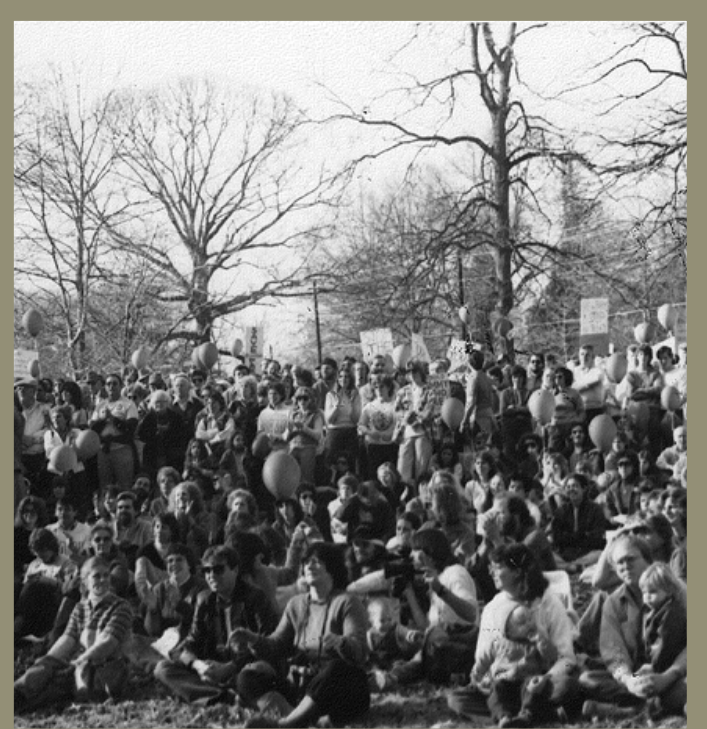


Charles Beveridge brought his knowledge, credentials, and standing to our grassroots efforts to stop a destructive highway through our Druid Hills linear park, the centerpiece of Frederick Law Olmsted's design for his 'last suburb.'

An influential witness before local and national entities, he began with a lecture in early 1983 at Emory University; became a mentor to Sally Harbaugh, founding president of the Olmsted Parks Society of Atlanta and subsequent NAOP board member, throughout the long legal battle won in the late 1990's; and ended as a major contributor to the master plan for restoration and rehabilitation of the linear park.

Charles Beveridge gave us the credibility we citizens needed to prevail.









## From the Zoom Chat Box

February 2, 2021

### JANE CENSER

Just wanted this evening to add my thoughts to the tribute to Charlie. At the Olmsted Papers, I found him an incredibly talented and sensitive mentor. He made me a better historian than when I began at the Papers. Perhaps the best thing that happened to me as I was finishing my Ph.D. was a fellowship at the Olmsted Papers. Charlie McLoughlin and Charlie Beveridge were wonderful bosses. Working with Charlie B and David Schuyler deepened my understanding of history. I was a social/political historian (and came to work on Vols. 4 and 6 which dealt with the Civil War and Reconstruction period when Olmsted's interests were deep in national concerns) but they gave me a great appreciation of Olmsted's aesthetic vision.

It's an incredible achievement and we all appreciate it greatly.

### DAVID AND MARCIA HOLDEN

A number of good memories, but the best is of how Charlie and Ann Satterthwaite helped us in Baltimore understand what a great Olmsted legacy we had and helped us figure out how to defend it. Many thanks forever.

### SUSAN RADEMACHER

Thank you, Charlie, for carrying the light of Olmsted, and showing us the way.

## **JANE GILL-SHALER**

Thank you, thank you, Charlie!!

## **BARBARA DREW**

Charlie, it was such a privilege and pleasure to have your insights and guidance for the Massachusetts Olmsted Historic Landscape Preservation Program. All of the program staff looked forward to the in-person consultations, and I fondly recall the resonance of your rich, warm voice...it was mesmerizing and it brings a smile to my face now as I recall you describing a scene that was glowering. My appreciation and blessings to you!

## **LAURENCE COTTON**

Thank you so very much, Charlie, for your extraordinary scholarship and personal dedication to this lifelong mission. It has been an honor to spend a little time with you and Faye in more recent years. It is also a great pleasure to see so many other wonderful, dedicated individuals who share this passion, many of whom have become friends while walking "the Olmsted trail." Cheers!

## **LYDIA BOESCH**

Pinehurst thanks Charlie for his work on Olmsted's work!

## **SUMMER SPROFERA**

So grateful for your contributions!! Thank you!

## **IRENE MILLS**

Cheers, Charlie!! Thank you so much.

## **SARA CEDAR MILLER**

Thank you, Charlie, and the memory of David and Caroline and FLO!

## **JEFFREY RYAN**

Thank you, Charlie and NAOP!

## **JAY NEWMAN FRLA**

Thank you Charlie!



## **CLYDE ELLER**

Thank you.

## **JOANN BECK**

I can't thank you enough Charlie!

## **GRETCHEN AND TOM TOLES**

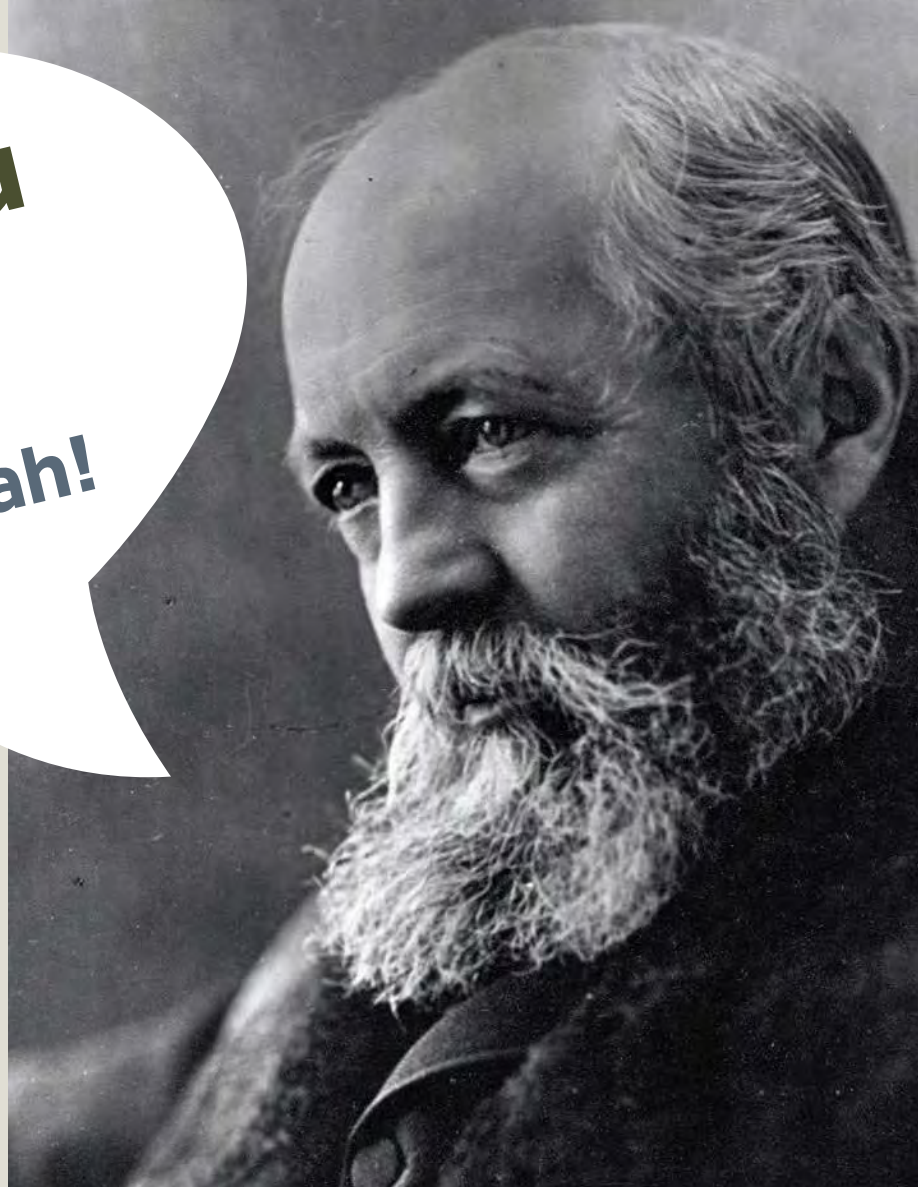
It has been such a pleasure knowing and working with you over the years, Charlie!  
Thank you!!!

## **JASON HARWELL**

Way to go Charlie! Thanks for being my example of dedication to a life's work!

**Thank you  
Charlie!**

**Hip hip Huzzah!**



**NAOP**

1200 18th Street NW, Suite 700

Washington, DC 20036

[www.olmsted.org](http://www.olmsted.org)



NATIONAL  
ASSOCIATION *for*  
OLMSTED  
PARKS